

Zenith™

GERMICIDAL ULTRAVIOLET DETECTOR

Zenith™ Germicidal Ultraviolet Detector

- Sensitive hand-held, self-contained battery operated ultraviolet meter.
- Monitors UV-C germicidal lamp intensity & aging.
- Measures UV-C germicidal fixture leakage.



GUARDIAN™

GERMICIDAL ULTRAVIOLET MONITOR

GUARDIAN™ Germicidal Ultraviolet Monitor

- Visually indicates the level of germicidal ultraviolet energy that penetrates the quartz sleeve and water within the disinfection chamber. The ultraviolet monitor is capable of operating an optional **Promate™** Audio Alarm and/or **Promate™** Solenoid Valve.
- Detects reduction of ultraviolet intensity due to: Fouling or deposits on quartz sleeve, poor UV transmission through water, depreciation of germicidal lamp, or lamp or component failure.
- The **GUARDIAN™** Digital Germicidal UV Monitor includes switch settings that control an internal audio alarm and the Solenoid Output. There are 4 settings; two of the settings have 2-Minute time delays of power to the Solenoid Output.



GUARDIAN™ ASSIST

GERMICIDAL UV MONITOR EXTENSION

GUARDIAN™ ASSIST Germicidal UV Monitor Extension

- Designed to remotely indicate the intensity level displayed on the **GUARDIAN™** Ultraviolet Monitor.
- Green "NORMAL" LED will illuminate if the intensity level is acceptable.
- Red "LOW" LED will illuminate if the intensity level is unacceptable.



SENTRY™

SAFETY SENSOR

SENTRY™ Safety Sensor

The safety sensor provides constant visual monitoring of the water purifier's ballast and germicidal lamp operation; indicator lights provide visual indication of ballast and germicidal lamp status.



STERALERT™

GERMICIDAL UV LAMP STATUS ALARM

STERALERT™ Germicidal Ultraviolet Lamp Status Alarm

The lamp status alarm monitors visible light emitted through the sight port plug of the water purifier and activates an audible alarm when visible light fails.



SENTINEL™

GERMICIDAL UV LAMP INDICATOR

SENTINEL™ Germicidal Ultraviolet Lamp Indicator

The remote indicator monitors lamp operation of one, two, or four lamp ultraviolet units and comes standard with a 25-foot connector cord. Additional 25-foot extensions are available. The **SENTINEL™** Remote Indicator can be configured for use with a wide variety of germicidal ultraviolet fixtures.



élan™

WATER FILTERS

élan™ Stainless Water Filters

Since the outlets on the **élan™** stainless water filters are located above the inlets, they outperform conventional filters and provide numerous advantages. Available in a diverse range of flows and variety of micron ratings.



SureFLO™

FLOW CONTROL VALVES

SureFLO™ Flow Control Valves

A complete line of 1 GPM to 80 GPM, PVC and Type 304 Stainless Steel valves are available. **SureFLO™** Flow Control Valves limit water flow to the rated capacity through the ultraviolet water purifier. Use of the Flow Control Valve is recommended by the U.S. Public Health Service "Criteria for the Acceptability of an Ultraviolet Disinfection Unit." For use with all **SANITRON®** and **MIGHTY★PURE®** and **MINIPURE®** Ultraviolet Water Purifiers.



QUANTUM™

THERMAL OPTIMIZERS

QUANTUM™ Thermal Optimizer

Used to help regulate the water temperature inside the purifier's chamber. Since the ultraviolet output of a germicidal lamp is affected by temperature, it is important to keep the lamp's temperature within the peak output temperature range.



Assure™

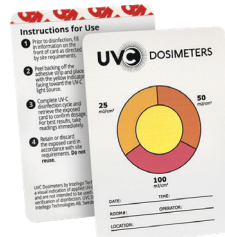
Assure™ UV-C Dosimeter

A portable, full-featured instrument that provides highly-accurate UV-C measurements in mJ/cm². Sits upright, on back or side, and can be placed in supplied wall holder. Uses 1 AAA battery.



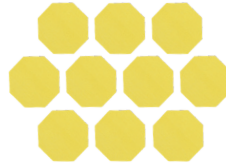
UV-C Dosimeter Card

Contains a patented colorimetric indicator that changes color at 25, 50, and 100 mJ/cm² to visibly confirm that your direct germicidal ultraviolet fixture is achieving the desired UV-C exposure. Each card is designed for 1 treatment cycle and **CANNOT** be reused.



Personal UV-C Exposure Indicators

These indicators change color to reveal the word “STOP” if personnel are exposed to an accumulated dose of 6 mJ/cm² of UV-C irradiation. Adhesive backing sticks to clothing. Available in packs of 10. Designed for single, daily use and **CANNOT** be reused.



Promate™ Danger & Warning Signs

To be affixed to entry door(s) to warn that an ultraviolet sanitizer is in use and that the treatment area **MUST** not be entered. Our direct germicidal UV fixtures are for use only in **unoccupied** areas. **NOTE:** Danger Signs have English on one side and Spanish on the other.



Promate™ Face Shield

Lightweight visor with adjustable headgear provides eye and face protection from germicidal ultraviolet rays.



Promate™ Safety Glasses

Safety eyewear should be used as general-purpose safety protection and for additional shielding from germicidal ultraviolet rays.



Promate™ Time Delay Mechanism

Time delay mechanism provides a 2-minute warm-up period during which the ultraviolet lamp achieves full germicidal output before the water is allowed to flow through the ultraviolet water purifier. The Time Delay Mechanism is used in conjunction with, and is electrically connected to, the Solenoid Valve. Use of the Time Delay Mechanism is recommended by the U.S. Public Health Service "Criteria for the Acceptability of an Ultraviolet Disinfection Unit." Configurations Available: 120v/50 or 60 Hz and 220v to 240v/50 or 60 Hz.



Promate™ Audio Alarm

Audio alarm is activated by the **GUARDIAN™** Ultraviolet Monitor or **SENTRY™** Safety Sensor, and alerts the user to any malfunction detected. Use of the Audio Alarm is recommended by the U.S. Public Health Service "Criteria for the Acceptability of an Ultraviolet Disinfection Unit." For use with all **SANITRON®** and **MIGHTY★PURE®** Ultraviolet Water Purifiers that utilize the **GUARDIAN™** Ultraviolet Monitor. Can also be employed by **SANITRON®**, **MIGHTY★PURE®** and **MINIPURE®** units in conjunction with the **SENTRY™** Safety Sensor. Configurations Available: 120v/50 or 60 Hz and 220v to 240v/50 or 60 Hz.



Promate™ Solenoid Valve

The solenoid valve operates in conjunction with the **GUARDIAN™** Ultraviolet Monitor or **SENTRY™** Safety Sensor. This valve prevents water flow through the ultraviolet water purifier whenever an abnormal condition is detected or in the event of power failure. Use of the Solenoid Valve is recommended by the U.S. Public Health Service "Criteria for the Acceptability of an Ultraviolet Disinfection Unit." For use with all **SANITRON®** and **MIGHTY★PURE®** Ultraviolet Water Purifiers that utilize the **GUARDIAN™** Ultraviolet Monitor. Can also be employed by **SANITRON®**, **MIGHTY★PURE®** and **MINIPURE®** units in conjunction with the **SENTRY™** Safety Sensor. Configurations Available: 120v/50 or 60 Hz and 220v/50 or 60 Hz. Models available for pressure or gravity flows.



Promate™ Elapsed Time Indicator

The elapsed time indicator is a real-time, non-resettable display of a water purifier's operating hours. This is extremely useful for scheduling and recording maintenance and lamp replacement. For use with all **MINIPURE®**, **MIGHTY★PURE®** and **SANITRON®** Ultraviolet Water Purifiers. Configurations Available: 120v/60 Hz and 220v to 240v/50 Hz.



Promate™ Clamp-Type Mounting Kit

A clamp type stainless steel mounting kit provides a neat, convenient means to wall or surface mount **MINIPURE®** Ultraviolet Water Purifiers. The kit includes a pre-drilled set of brackets and clamping rings.



Promate™ Bracket-Type Mounting Kit

A bracket type stainless steel mounting kit provides a quick and easy method of installing the purifier on a vertical surface for a neat, professional appearance. The kit includes a pre-drilled set of brackets and the hardware necessary to secure the purifier. This mounting arrangement allows free air circulation to optimize cooling of the ballast housing. For use with all **MIGHTY★PURE®** units and for **SANITRON®** units S17A–S2400C.

